

# Somalia Humanitarian Fund: 2017 allocations

As of 19 June 2017

An elevated risk of famine persists in parts of Somalia due to severe food consumption gaps, high acute malnutrition and disease burden. Over 6.7 million people are in need of humanitarian assistance; more than 700,000 have been displaced since November 2016 and diseases such as AWD/cholera and measles continue to spread.

Humanitarian partners have significantly scaled up assistance, but these efforts must be sustained to avert famine, particularly in the worst drought-affected areas that are already facing severe food insecurity, alarming rates of malnutrition and disease outbreaks.

To help partners deliver the most urgently needed assistance and ensure a strong collective response, the Somalia Humanitarian Fund (SHF) has already allocated more than US\$33 million in 2017.

In January 2017, an integrated approach was agreed to guide allocations and ensure maximum impact of the SHF First Standard Allocation and Central Emergency Response Fund (UFE) underfunded emergencies grants. The approach prioritized the most immediate needs in the worst-affected areas, with CERF funds used mainly to cover procurement of life-saving supplies in bulk through UN agencies while

SHF funding went directly to the best-placed NGOs to ensure quick and efficient delivery of assistance.

Further funds were made available from the SHF Reserve to support enabling programmes; an additional \$6.5 million for Integrated Multi-cluster Response to address critical gaps at locations receiving large numbers of IDPs in Banadir and Bay regions; and to fight cholera outbreak in Somaliland.

SHF allocations support the highest priority projects of the revised 2017 Humanitarian Response Plan, which requires \$1.5 billion to sustain the humanitarian response in Somalia through the second half of 2017.

## KEY 2017 FACTS AND FIGURES

**\$46.6 million**  
Funding available for 2017

**\$33.1 million<sup>1</sup>**  
allocated, January - June 2017

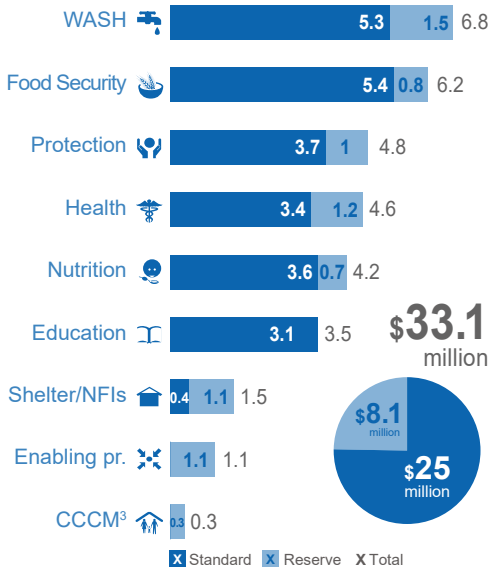
**98% to NGOs**  
national and international (2017)

**36% to national NGOs**  
Focus on national partners

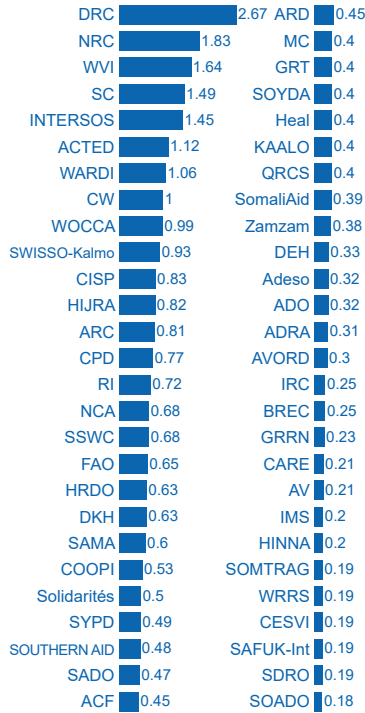
**54 partners, 109 projects**  
supported in 2017 to-date

**Improved timelines**  
by 8 days in 2017 (compared to 2016)

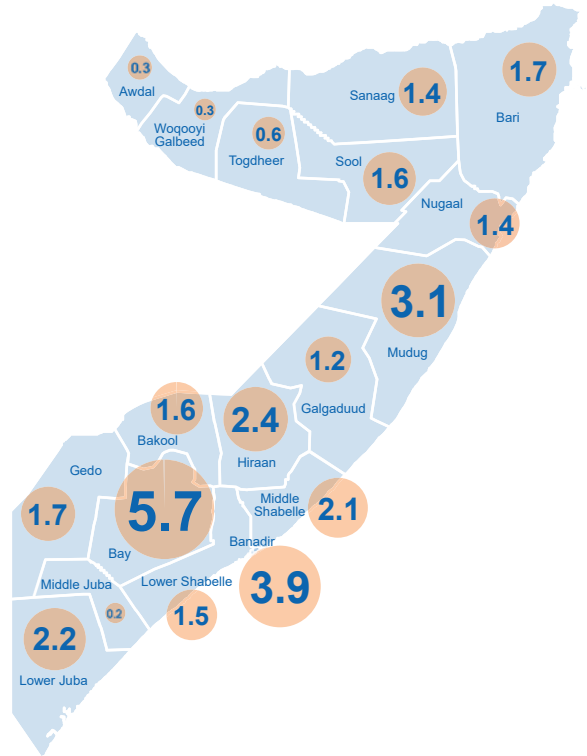
## FUNDING BY CLUSTER (US\$ million)



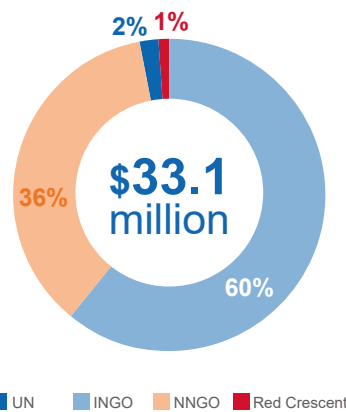
## RECIPIENTS<sup>2</sup> (US\$ million)



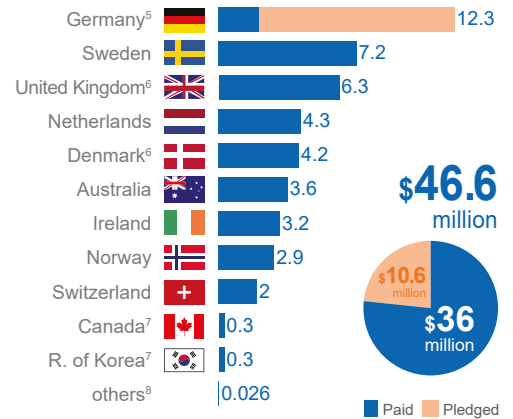
## TOTAL ALLOCATION BY STATE (US\$ million)



## ALLOCATIONS BY PARTNER TYPE



## FUNDING AVAILABLE IN 2017<sup>4</sup> (US\$ million)



## AFFECTED PEOPLE TARGETED WITH SHF FUNDS<sup>9</sup>



<sup>1</sup> Programmed amounts since January 2017. A portion of the First Standard Allocation funds (\$1.4 million) was programmed under 2016 Reserve projects. For real-time allocation and approval data visit CBPF Business Intelligence at <http://gms.unocha.org/bi>. <sup>2</sup> Consult the SHF website for the full list of partner acronyms. <sup>3</sup> Camp Coordination and Camp Management. <sup>4</sup> Includes contributions deposited in December 2016, intended for programming in 2017. <sup>5</sup> \$2.1 million deposited, additional \$10.2 (€9.15) million pledged. <sup>6</sup> Recorded as 2016 contributions. <sup>7</sup> Pledged, pipeline. <sup>8</sup> Contribution from Sri Lanka (\$1,500) and Arab Gulf Programme for UN Development Organizations (\$25,000). <sup>9</sup> Planning figures. <sup>10</sup> Number of people targeted with assistance in Somalia (June 2017). \*\*\* To contribute to the SHF please contact OCHA Somalia Humanitarian Financing Unit at [kovacm@un.org](mailto:kovacm@un.org).